

10/14/2010



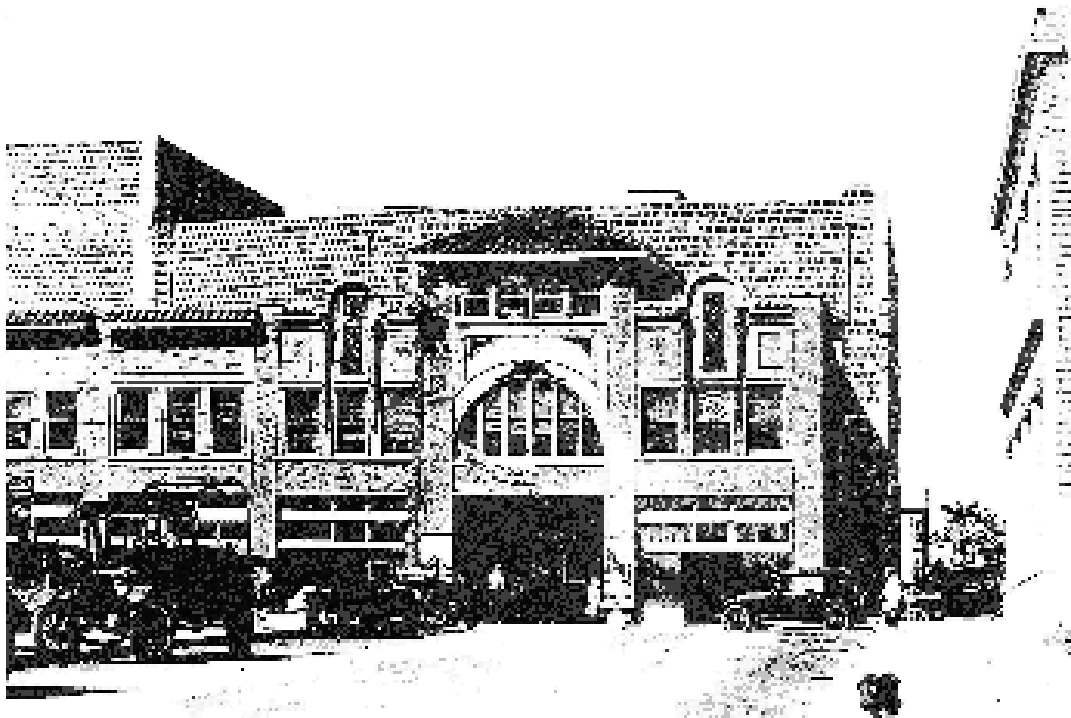
SUNRISE THEATRE OF THE PERFORMING ARTS  
Black Box Event Space  
117 SOUTH 2<sup>ND</sup> STREET  
FORT PIERCE, FLORIDA 34950

772-461- 4884: Administration

772-46-8373 fax

[www.sunrisetheatre.com](http://www.sunrisetheatre.com)

tech@sunrisetheatre.com



1923 VIEW

10/14/2010

## **TABLE OF CONTENTS**

Page 1	Contact numbers, useful area information, hotels, taxi service
Page 2	Restaurants, Handicapped access, Emergency numbers, Dry Cleaners Travel Directions, Time Zone.
Page 3	Lay out, Load In, Parking, Carpentry
Page 4	Room Plan & information, Dimensions
Page 5	Full Theatre Mode Seating Chart
Page 6	Stage & Soft Goods Information
Page 7	Lighting Inventory, Hanging Information, Projection
Page 8	Audio & Sound
Page 9	Props & Orchestral Equipment, Piano Inventory
Page 10	Miscellaneous & Wardrobe
Page 11	List of attachments.



**1930s?**

The Sunrise Theatre, opened in 1923 as a silent film/vaudeville house, was completely renovated in 2005 and reopened January, 2006. It now is home to two performance spaces: the 1200+ seat mainstage and the Black Box which can hold 218 when set in theater mode. It is a department of the City of Fort Pierce managed by an Executive Director and reports to the City Commission via the Fort Pierce Redevelopment Agency.

10/14/2010

**CONTACT NUMBERS**

Technical Services – Marty Petlock, Technical Director  
772 461 4884 ext. 309  
772-828-1536 Cell,  
772-461-8373 fax  
[tech@sunrisetheatre.com](mailto:tech@sunrisetheatre.com)

Programming – John Wilkes, Executive Director  
772- 461-4884 ext. 308  
772-461-8373 fax  
[exec@sunrisetheatre.com](mailto:exec@sunrisetheatre.com)

Box Office, Merch. - Shirlee Fajardo  
772-461-4775, ext 313  
772-461-8373 fax  
[Boxoffice@sunrisetheatre.com](mailto:Boxoffice@sunrisetheatre.com)

Marketing Director - Renee Page  
772 461 4884 ext. 306  
772-461-8373 fax  
[rpage@sunrisetheatre.com](mailto:rpage@sunrisetheatre.com)

Fort Pierce is located on the East (Treasure) Coast of Florida. Between I-95 exits 129 & 131 and Florida Turnpike exit 152.

Area Hotels:

The Sandhurst Hotel & Suites 772-595-0711 – Closest to the Sunrise (5 minute drive)

Royal Inn Beach Hotel 772-672-8888 – on the beach (10 minute drive)

Fairfield Inn 772-462-2900– Convenient to I-95 & Turnpike (15~20 Minute drive)

Holiday Inn Express & Suites 772-464-5000 - Convenient to I-95 & Turnpike (15~20 Minute drive)

Taxi Service:

Checker Cab 772- 334-1234

Dry Cleaning :

60 Minute Cleaners 772-461-3875  
1401 Orange Ave  
Fort Pierce, FL.

10/14/2010

Restaurants – all handicapped accessible:

Tiki Bar & Restaurant of Fort Pierce  
2 Avenue A (on the Indian River)  
Fort Pierce, FL.  
772-461-0880 (on the water 5 minute walk from theatre)

Yellow Tail  
101 N. 2<sup>nd</sup> Street  
Fort Pierce, FL.  
772-466-5474  
(Right around the corner)

Brewers  
204 Orange Ave  
Fort Pierce, FL.  
772-460-7666  
(Right around the corner)

Bangkok in Downtown (Thai & Sushi)  
217 Orange Ave.  
Fort Pierce, FL.  
772-464-7117  
(Right around the corner)

Sunrise City Bakery and Café  
134 S. Indian River Dr.  
Fort Pierce, FL.  
772-429-3435  
(Down the street)

Handicapped Access:

At street level, dressing rooms are at street level are fully wheelchair accessible but there are two steps between Black Box and

Emergency:

Police – Fire – Ambulance:           **911**

Hospital

Lawnwood Regional Medical Center  
& Heart Institute  
2860 North Lawnwood Circle  
772-466-1500  
[www.lawnwoodmed.com](http://www.lawnwoodmed.com)

Chiropractic Clinic

Gentle Care Chiropractic  
500 So. U. S. Highway One  
Fort Pierce, FL.  
772-489-4055

Urgent Care

Fort Pierce Walk-In Medical Clinic  
900 Virginia Ave., Suite 10  
Fort Pierce, FL.  
772-464-6551

Dental Care

Lawnwood Dental Care  
1900 Nebraska Ave  
Fort Pierce, FL  
772-595-1888

Travel Directions

I-95 from the South – get off at Exit 129, I-95 from the North – get off at Exit 131  
FL. Turnpike exit 152. All are ±5 miles from the venue.

**Exit 129 & Turnpike: Head East on Virginia Ave (FL Rt. 70), stay on the left.** After about a mile road will split, stay left on Okeechobee Rd. Okeechobee will dogleg to the right and re-name itself Delaware avenue. Delaware Ave, ends at US1. Make a left, then an immediate right over the Citrus Ave. Bridge. The other end of the bridge is 2<sup>nd</sup> St Turn Left, go two blocks to front of the venue. Call me prior to your date to discuss parking & load in.

**FROM EXIT 131:**

Head East on Orange Ave. When you hit US1 go across, make the first Right turn onto 2<sup>nd</sup> St. Drive past the marquee. Call me prior to your date to discuss parking & load in..

**Eastern Standard Time Zone!**

10/14/2010

**LAYOUT:**

Green Room – Smallish, off Stage Right . Dressing rooms open onto it. Dressing rooms availability is determined by Main Stage use and requirements on the day.

**There is no Stage Manager's Console!**

The Sunrise can provide skilled Theatre Technical staff for events.

Storage – Minimal available for event related items

**WI FI NETWORKS AVAILABLE THROUGHOUT VENUE.**

**LOAD-IN AREA:**

Street load in only, please call to discuss, largest access is double 'man' doors

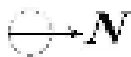
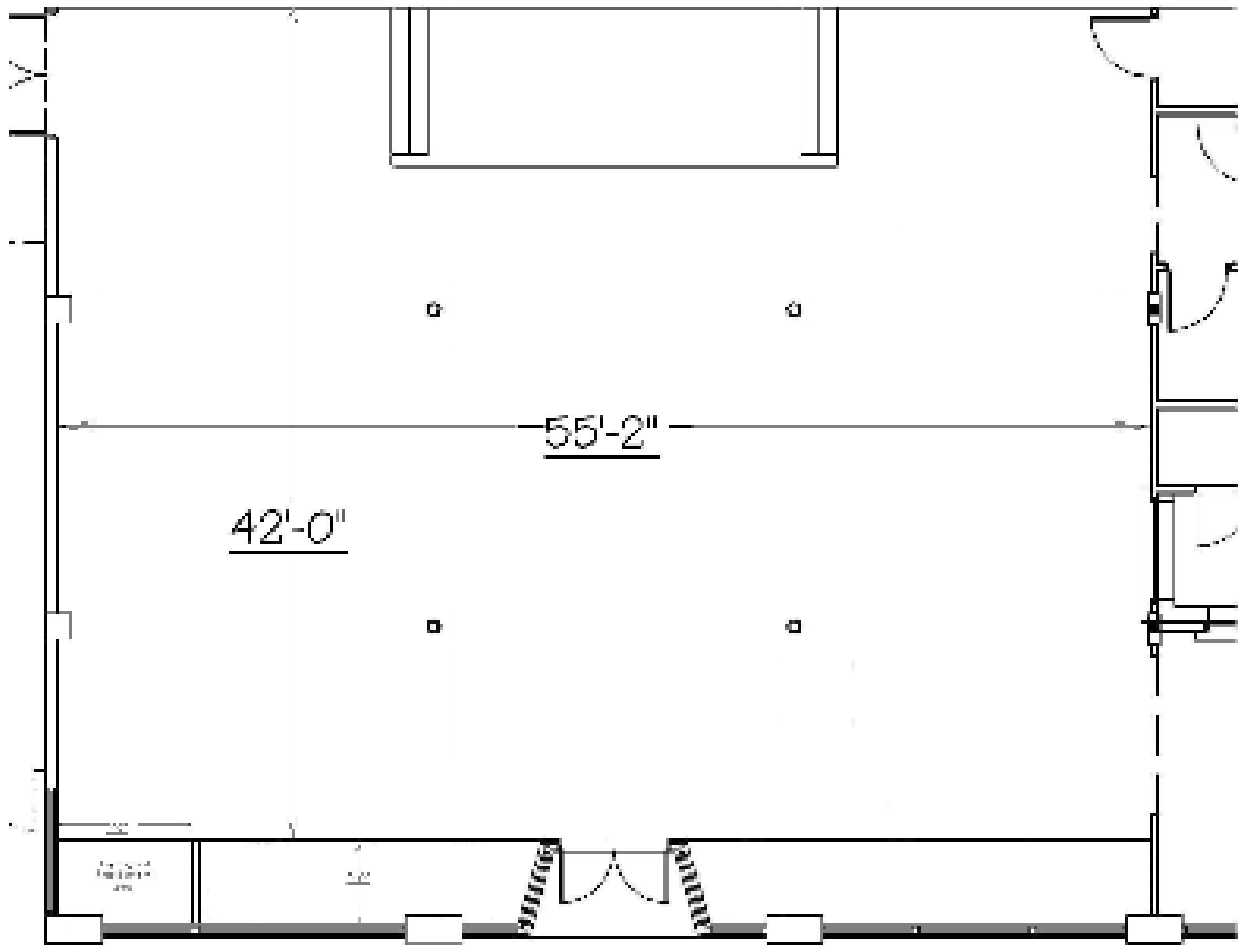
Parking – LIMITED PARKING FOR TRUCKS AND BUSES – CONTACT TECHNICAL DIRECTOR FOR DIRECTIONS.

Seated Theater Mode, view from main entrance



10/14/2010

**Room Layout:**



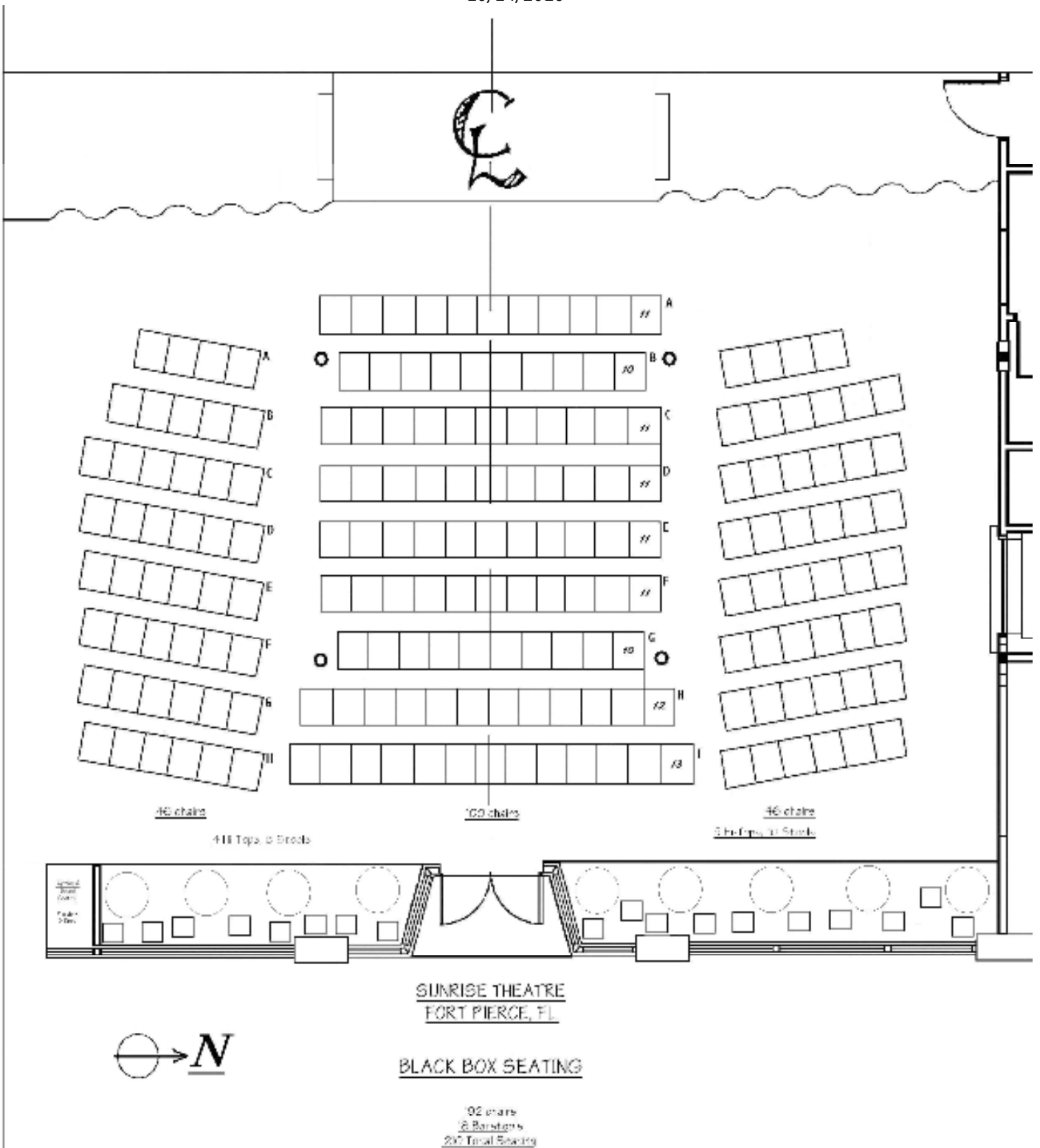
10/14/2010  
10/14/2010

Seating – ±210 maximum including V.I.P area. All seating is adjustable and can be any desired configuration or removed entirely. Room dimensions are shown above.

Clearance to ceiling support beams: 11'-4", to ceiling 12'-0"

Full seating plan next page:

10/14/2010





10/14/2010

**Stage Information:**

5 Wenger 'Trouper' 4' X 8' decks create an 8' deep X 20' wide stage at 16" high. Additional decks are available. Tops are black vinyl and no screw or nails are permitted. There is some additional masked wing space on either side of the stage.

Lighting & Sound Control located in a dedicated cubicle S.E. corner of room.

**House Draperies & Soft-Goods:**

Black IFR Velour masking panels at stage sides, these may be removed at additional expense.

Window masking drapes are tracked for easy open or closed positioning.

There is no fly system however 'U' channels are provided every 4' running North to South for hanging purposes.



Theatre Mode, Stage View



10/14/2010  
**LIGHTING:**

Dimmers –6 Lightronics XC 40D 4X600 Watt (1440 W Max.) Truss Mount Wireless Dimmer packs:  
Edison.

Control Board – Lightronics.TL-2448 Memory Console

House Light Control – In control cubicle – 4 slider wall dimmers

Circuits –20amp Edison Located throughout the room: Walls, pillars, ceiling.

Company Switch - 1 - 100amp 3phase w/cam-lok connectors; No Licensed Electrician required to connect Cam-Loks. Located in control cubicle.

**Lighting Equipment Inventory:**

ALL UNITS HAVE: Color Frame, Edison Connector, Safety cable.

**NB: Units are mounted with ½” bolt into Unistrut channels NO ‘C’ CLAMPS!**

575W Source 4 ERS.

2- 36°

4- 50°

2 – 25~50° Zoom

*2 drop in Iris, 6 - ‘B’ size pattern holder.*

12 - Source 4 PAR30 w/4 lens set

*12 – Barn doors for above.*

2 – Elektralite MB 150 rotating Barrel fixture – DMX.

12 – Chauvet LD Light Pallet wash lights

Assorted extension cords and DMX cables.

Additional units from Main Stage inventory may be available.

**Hanging Positions:**

Throughout the room running North to South are ‘U’ channel tracks at 4’ intervals.

**Projection Equipment & Video Capability:**

1 - PANASONIC PT-DW7000 U-K Projector, availability may be limited, check w/ T.D.

Wall behind stage area is a ±8’ High X 12’Wide projection surface masked by a tracked black drape.

10/14/2010



Main Entrance

**AUDIO & SOUND:**

- 2 SHURE SLX SM58 HANDHELD WIRELESS MIC SYSTEMS
- 2 SHURE SM58-LC MICS
- 3 SHURE SM57-LC MICS
- 1 SHURE BETA 52 MIC
- 2 SHURE KSM32 MICS
- 2 SHURE SM81 MICS
- 1 YAMAHA LS9/16 CONSOLE
- 4 YAMAHA TNX-4 AMPLIFIERS
- 1 YAMAHA TNX-5 AMPLIFIER
- 4 YAMAHA IF2112 MAIN SPEAKERS
- 2 YAMAHA IS1215 SUB SPEAKERS
- 6 YAMAHA CM10 MONITOR SPEAKERS

**Cable:**

There are multiple and various quantities and lengths of Whirlwind Microphone cable and speaker cables - with connectors. Also, an assortment of snakes, direct boxes, adapters, and microphone stands. Main Stage inventories may be available.

10/14/2010



1948 – Backlit Marquee & Air Conditioning installed!

**PROPS:**

**ORCHESTRAL EQUIPMENT:**

Chairs – 23

Stands - 35

Stand Lights – 18

Conductor podium available

**Availability dependent on Main Stage needs on the day!**

**PIANOS IN HOUSE:**

Yamaha C-7, tuned each performance.

Baldwin Upright - some cosmetic damage.

Samick 5' Baby Grand White – legs off, in storage.

10/14/2010

**Miscellaneous:**

Various Folding tables

Orchestra Shell - None Available

Platforms – 16 - 4'-0" X 8'-0" variable heights, 2 – 8' X 8' rolling risers, adjustable height.

.Lecterns – One - dark wood

**WARDROBE:**

Dressing Rooms – Se attached diagram

Four Dressing Rooms at stage level – Stage Right

2 – 2 person Private Rooms, each w/makeup lighted mirrors, toilet , and shower

2 – 8 person Chorus Rooms, each w/makeup lighted mirrors, toilet , and shower

One 12 person Dressing Room one floor above stage level – no restroom attached.

Wardrobe Area – Contact T.D. For Special Needs

2 – Irons, 1 – Steamer, Washer & Dryer, Rolling Costume Racks available.



Pre-construction exterior: 2009



10/14/2010

**LIST OF ATTACHMENTS:**

Dressing Rooms & Green Room Plan



1950

The four store fronts to the left of the Marquee are now the Sunrise Black Box Theatre